

DCB580 Shipping Container

Specification

Model:	DCB580
Dimensions:	580*220*220cm
Color:	RAL7016
Window:	Concession windows, with gas struts
Electrical:	220V/50HZ
Net Weight:	2,500KG
Gross Weight:	2,900KG
Max. Load Weight:	1,000KG
Material:	Frame: Galvanized steel Exterior wall: Corrugated steel Rooftop deck: wooden flooring Insulation: 25mm black cotton Interior wall: ACM Workbench: 201 stainless steel Floor: Non-slip aluminium checkered floor
Electrical System:	Electrical panel board Circuit breaker EU power sockets 32A generator receptacles EU Electrical wires
Lighting:	Interior lighting units 8 black track lights LED LOGO sign Round LED sign
Water Sink Kits:	2 compartment water sinks Commercial faucet for cold & hot water Floor drain
Water Supply System:	24V water pump 25L food-grade clean water tank 25L food-grade waste wastewater tank

Kitchen Equipment:	Front stainless steel workbench with cabinets Rear stainless steel wit back splash 1.8m under-bench freezer Gas grill Gas fryer 1.6m stainless steel exhaust hood
Warranty:	1 year warranty for free
<p>For more information on this model, such as size options, pricing, standard configurations, customization and upgrades, production time, delivery terms, etc., please email sales@etofoodcarts.com. Our sales agent will contact you within a day or even sooner to address any inquiries you may have.</p>	



etodevice

Details



- Front -



- Side -



- Stairs -



- Side -



- Rear -



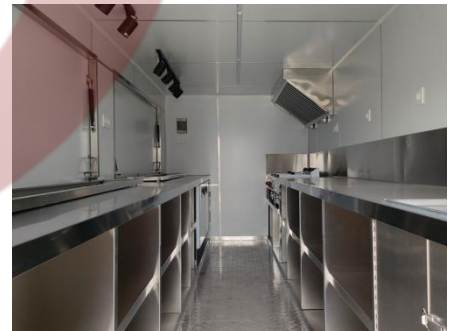
- Door -



- Light -



- Light -



- Interior -



- Equipment -



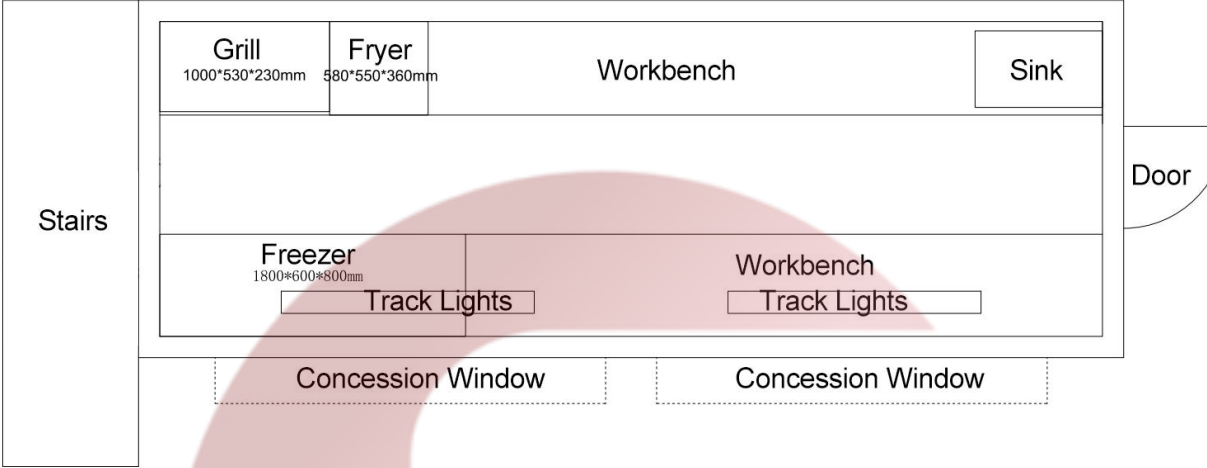
- Concession Windows -



- Sinks -

Floor Plan

Model: DCB580, Dimensions: 580*220*220cm, Color: RAL7016



etodevice

Design

